



Result of Winter Lettuce

Location: Valdivia de Paine, Chile- June 2015



CEPA



Result Winter Lettuce

Location: Valdivia de Paine June 2015

These are the results of lettuce grown during the winter, in spite of numerous days with temperature at -4 Celsius.

The Farmer has been applying our Products during the past two seasons, in lettuce, broccoli, tomatoes and coliflowers.

Because of the winter conditions, he applied the following program:



Resultados en Lechugas

Valdivia de Paine Junio 2015

Location : Valdivia de Paine, North Chile

Crop : Lettuce

Variety : Milanesa, Winter Gallega.
Escarol, Deserton.

Irrigation : Dripping with well water.



Results Winter Lettuce

Valdivia de Paine - June 2015

Milanesa, Winter Gallega :

Planted

5/4/2015

Harvested

10/06/2015

Growth Cycle

65 días

Escarol, variety Deserton

Planted

10/4/2015

Harvested

30/06/2015

Growth Cycle

75 días



Resultados en Lechugas

Valdivia de Paine Junio 2015



Many successive freezes hit this area
at -4°C .





Results Winter Lettuce

Valdivia de Paine - June 2015

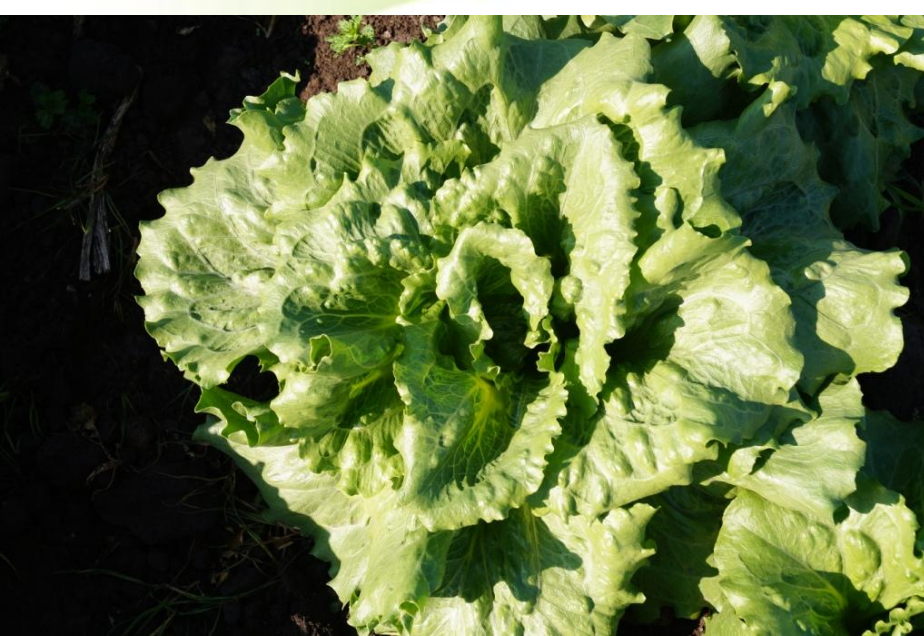


Crop appearance: Very even, good color and caliper



Results Winter Lettuce

Valdivia de Paine June - 2015



Healthy and uniform lettuce



Results Winter Lettuce

Valdivia de Paine June - 2015

Soluciones Orgánicas para el Futuro

Program Lettuce per Ha.

APPLICATION	PRODUCTS	At 15 Days from Transplant	At 30 Days from Transplant	At 45 Days from Transplant	Total
Foliar	ProGrow 908 CombiPlus LithoVIT	1,0 lt 0,05 kg	1,0 lt 0,05 kg 0,5 kg	1,0 lt 0,05 kg 1,0 kg	3,0 lt 0,2 kg 1,5 kg
Soil	PRODUCT	At 10 Days From Transplant	At 20 Days From Transplant		
	ProGrow 908	1,0 lt	1,0 lt		2,0 lt



Results Winter Lettuce

Valdivia de Paine June - 2015

These are the comments from the Producer:

- ✓ We did not need using any heat blankets.
- ✓ 100% homogeneous in caliper and healthy crop.
- ✓ Normal growth cycle during the winter, 100 to 120 days, with our program 65-70 days.
- ✓ In the Escarol section, they hope to complete the cycle, also
- ✓ without using any heating blankets.